

This Map is for Graphical Purposes Only.  
For Verification of Actual Attendance  
Boundaries, Contact School District 300  
Transportation Department.

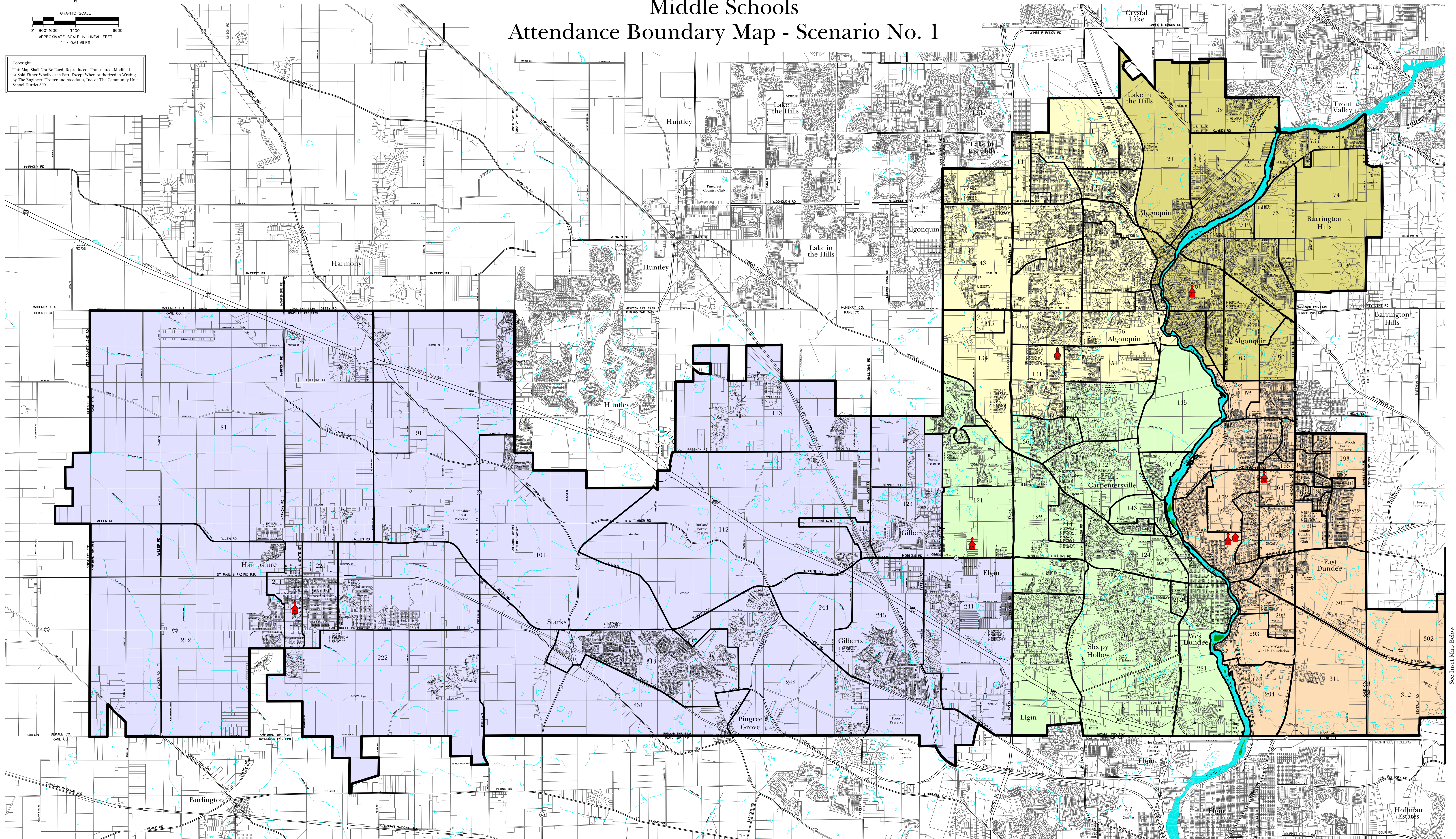
# Community Unit School District 300

This Map is for Graphical Purposes Only.  
For Verification of Actual Attendance  
Boundaries, Contact School District 300  
Transportation Department.

GRAPHIC SCALE  
0' 800' 1600' 3200' 6400'  
APPROXIMATE SCALE IN LINEAL FEET  
1" = 0.61 MILES

Copyright:  
This Map Shall Not Be Used, Reproduced, Transmitted, Modified  
or Sold Either Wholly or in Part, Except When Authorized in Writing  
by The Engineer, Tractor and Associates, Inc. or The Community Unit  
School District 300.

## Middle Schools Attendance Boundary Map - Scenario No. 1



### Legend

#### Administration/Special Facilities

District 300 Board of Education  
Administration Center  
300 CLEVELAND AVENUE  
CARPENTERSVILLE, ILLINOIS 60110  
PHONE: 815.426.1300  
WWW.D300.ILGOV

Oak Ridge School  
729 LAKE MARIAN ROAD  
CARPENTERSVILLE, ILLINOIS 60110-2010  
PHONE: 815.426.4002  
FAX: 815.426.4174

#### Community Unit School District 300 - Middle Schools

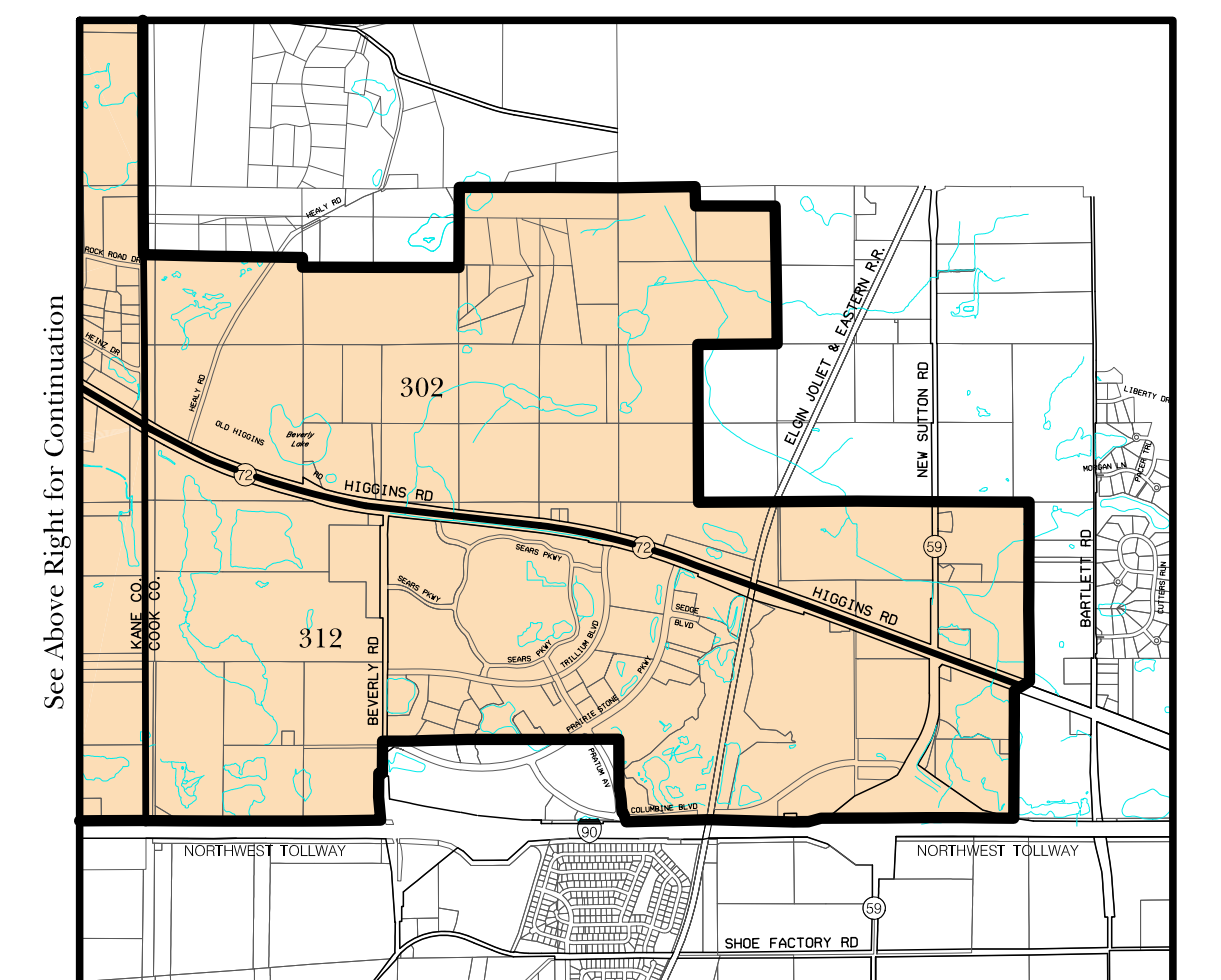
Algonquin Middle School  
30 LONGWOOD DRIVE  
ALGONQUIN, ILLINOIS 60110-2000  
PHONE: 815.426.2145  
FAX: 815.426.2147

Carpentersville Middle School  
100 CLEVELAND AVENUE  
CARPENTERSVILLE, ILLINOIS 60110-2100  
PHONE: 815.426.1300  
FAX: 815.426.1101

Dundee Middle School  
37400 ROUTE 72  
WEST DUNDEE, ILLINOIS 60150-0500  
PHONE: 815.426.1845  
FAX: 815.426.0000

Hampshire Middle School  
600 SOUTH STATE STREET  
HAMPSHIRE, ILLINOIS 60140-0000  
PHONE: 815.426.1227  
FAX: 815.426.1050

Westfield Community Middle School  
2100 SLEEPY HOLLOW ROAD  
ALGONQUIN, ILLINOIS 60102-6000  
PHONE: 815.426.2100  
FAX: 815.426.2100



Prepared By:  
**TROTTER**  
ASSOCIATES  
Engineers and Surveyors  
10000 N. W. 11th Ave., Suite 100  
Miami, FL 33150  
Date: February 10, 2002  
Revised: January 26, 2008